

SeQent
Corporate Office
Suite 137 – 4500 Blakie Road
London, ON,
N6L 1G5
Canada
Phone: +1.519.652.0401

User and Installation Guide



SeQent
Real-Time Visualization

FirstPAGE Alarm Manager Gateway for CIMPLICITY
V9.00

Table Of Contents

Terms of Use	3
Version Information	4
Edits	4
Customer Service	5
Support Contracts	5
Location	5
.1. Product Overview	7
How it Works	8
.2. Installation	9
Prerequisites	9
Installing the Application	10
Installing FirstPAGE Alarm Manager Gateway for CIMPLICITY	10
Adding Project Properties Options for FPAM Gateway for CIMPLICITY	12
.3. Configuration	13
Configuring Key Components – Gateway Server	13
Adding a FirstPAGE Alarm Manager Gateway for CIMPLICITY Server	13
Enabling and Configuring Security	18
Configuring FPAM Gateway for CIMPLICITY Options	21
Configuring the Gateway for CIMPLICITY options	21
.4. Using FPAM Gateway for CIMPLICITY	22
Viewing the Log Files	23
Glossary	24

Terms of Use

Information in this document is subject to change without notice and does not represent a commitment on the part of SeQent. The software, which includes information contained in any databases, described in this document is furnished under a license agreement or nondisclosure agreement and may be used or copied only in accordance with the terms of the agreement. It is against the law to copy the software on any medium except as specifically allowed in the license or nondisclosure agreement. No part of this manual may be reproduced or transmitted in any form or by any means, electronic or mechanical, including photocopying and recording, for any purpose without the express written permission of SeQent.

This software program and associated documentation are provided in an "as is" condition. In no event shall SeQent, its employees, directors or agents be liable for any loss or damage whatsoever (including, but not limited to, damages for loss of business profits, business interruption, loss of business information, or other monetary loss) arising out of the use of or the inability to use this software. By installing this software on your computer system you acknowledge that you have read and understood these terms and that you accept them.

© 2011 SeQent All rights reserved.

Printed in Canada

FirstPAGE Alarm Manager is a trademark of SeQent. Other brand and product names are trademarks, or registered trademarks, of their respective holders.

Version Information

Edits

Version	Date	Author	Description
V9.00	February, 2010	K. MacLennan	Initial Document

Customer Service

Support Contracts

You may purchase a support contract for any of our products. Support is free for product trials and for the first 30 days of product ownership.

To view the SeQent support options, go to our web site (www.SeQent.com). To contact SeQent's Customer Support department please use the following methods.

Urgent Issues:

Normal Business Hours (Weekdays 9AM-5PM EST):

1. Dial: +1.519.652.0401
2. Select: Option 1

If there is no answer then please leave a voice mail message with your contact information and your call will be returned promptly.

After Hours (Weekdays 5PM-9AM EST, Weekends and Canadian Holidays):

1. Dial: +1.519.652.0401
2. Select: Option 1
3. Listen to the on-call phone number provided
4. Call the indicated after hours number

If there is no answer then please leave a voice mail message with your contact information and your call will be returned promptly.

Non-Urgent Issues / Questions

Normal Business Hours (Weekdays 9AM-5PM EST):

1. E-Mail: Support@SeQent.Com
2. Include the following information:
 - Contact Information
 - Product Name
 - Version
 - Description of the problem being experienced

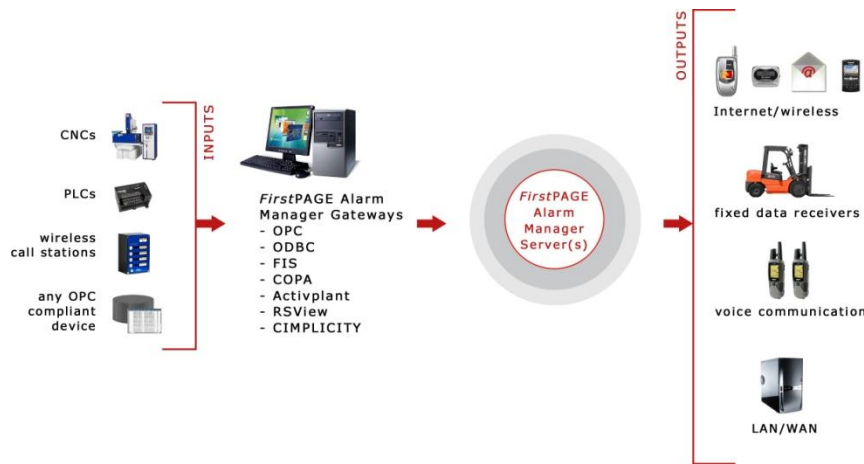
Location

Corporate Office

4500 Blakie Road, Suite 137
London, Ontario
Canada
N6L 1G5
Phone : +1.519.652.0401
Fax : +1.519.652.9275
Email: info@SeQent.com

1. Product Overview

SeQent's FirstPAGE Alarm Manager Gateway for CIMPLICITY is a FirstPAGE administration system that allows users to easily configure various rules that once triggered will send a message to a variety of FirstPAGE destinations, using a simple generic language.



Key Features:

- Hot reload for any configuration changes/additions
- Data items embedded in alarm messages are updated during the life of the alarm

How it Works

FirstPAGE Alarm Manager Gateway for CIMPLICITY is another product in the FirstPAGE Suite of products and may reside on your FirstPAGE Alarm Manager Server or access a FirstPAGE Alarm Manager Server over a LAN or WAN connection.

The FirstPAGE Alarm Manager Gateway for CIMPLICITY provides a bridge between CIMPLICITY project alarms and the FirstPAGE Alarm Manager Server. Various routing rules can be defined by selecting available Resources, Alarms, Classes and alarm message text that have been configured in a CIMPLICITY project. When one of these rules is met, message text can be dispatched to FirstPAGE Server, including embedding alarm and point values within the message text.

There are four valid alarm states that may be configured for each Routing Rule:

- Generate – Alarm is initiated via FirstPAGE Alarm Manager and the alarm becomes active by meeting the rules defined in CIMPLICITY Workbench – Points on the Alarm tab
- Acknowledged – the alarm is Acknowledged by an operator with Alarm Viewer or the point is set up to Auto Ack in the Alarm Options of that point.
- Reset – the alarm is back within normal parameters or the point is set up to Auto Reset under the Alarm Options of that point.
- Delete – the alarm has been terminated and has met the rules under the Deletion Requirements in the Alarm Options.

2. Installation

Prerequisites

Before beginning the installation, it is important to determine the hardware and software requirements necessary for FirstPAGE Client to run efficiently. Review the following prerequisite list before the software is installed.

Licensing	General: Per server Licensing Options: None
Product Requirements	FirstPAGE Alarm Manager Server V9.x CIMPLICITY v7.0+
System Requirements	One of: Microsoft Win2K3 (SP1+) Microsoft WinXP (SP1a+) Microsoft Win2K8 Microsoft Win2K8R2 Microsoft Win7 Microsoft Win7-64 Display: 800x600 Disk Space: 200MB RAM: 128MB
Drivers	TCP/IP MDAC V2.7 (SP1+)

CIMPLICITY Configuration

In order for FirstPAGE Alarm Manager Gateway for CIMPLICITY to receive alarms from your CIMPLICITY project, all applicable alarms **must** be configured with valid resources. These resources must be attached to valid roles, which are in turn attached to valid users. If all pieces of this setup are not in place, the Gateway will not be able to receive these alarms. As a general rule of thumb, if an alarm is not captured by CIMPLICITY's internal alarm viewer tool, the Gateway will not receive it.

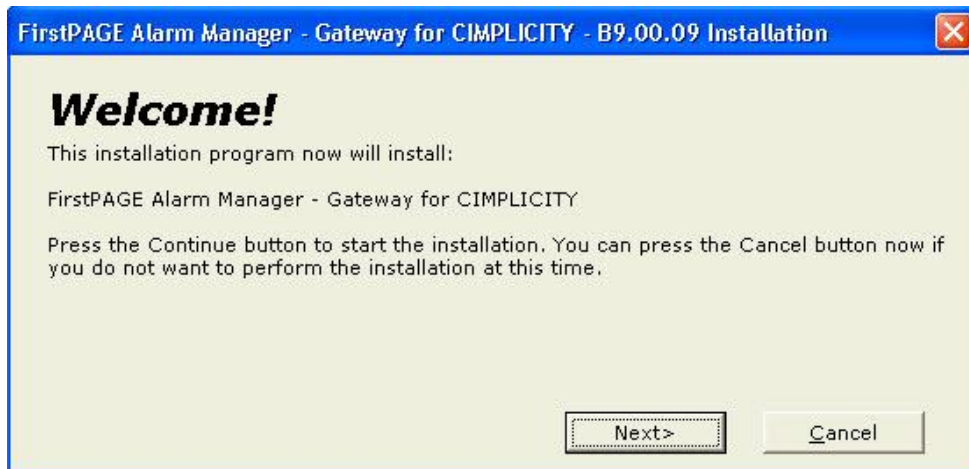
Installing the Application

Before installing FirstPAGE for the first time, the following information must be considered:

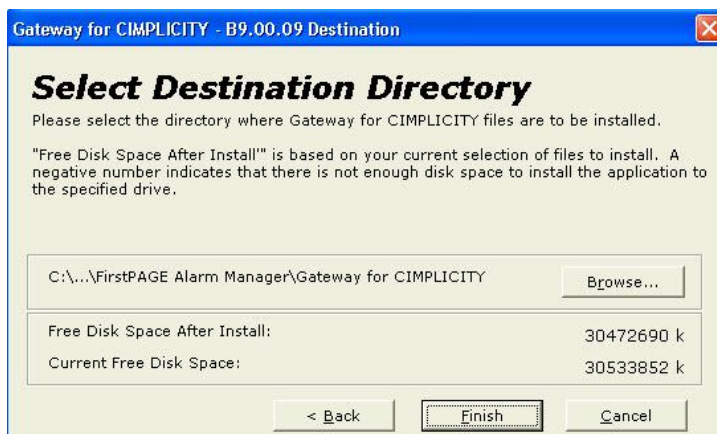
- Determine which disk drive/directory your FirstPAGE Alarm Manager Gateway for CIMPLICITY software will reside on.
- Determine the Host name of the FirstPAGE Alarm Manager Server you will be connecting to.
- Determine the CIMPLICITY project name that will be utilized by the Gateway.

Installing FirstPAGE Alarm Manager Gateway for CIMPLICITY

1. Run FirstPAGE Alarm Manager Gateway for CIMPLICITY SETUP.EXE. Click *Next*.



2. After accepting the licensing agreement, select the installation destination directory.



3. Click *Finish* to complete the installation. The computer must be restarted before the FirstPAGE Alarm Manager Gateway for CIMPLICITY can be configured or operated.

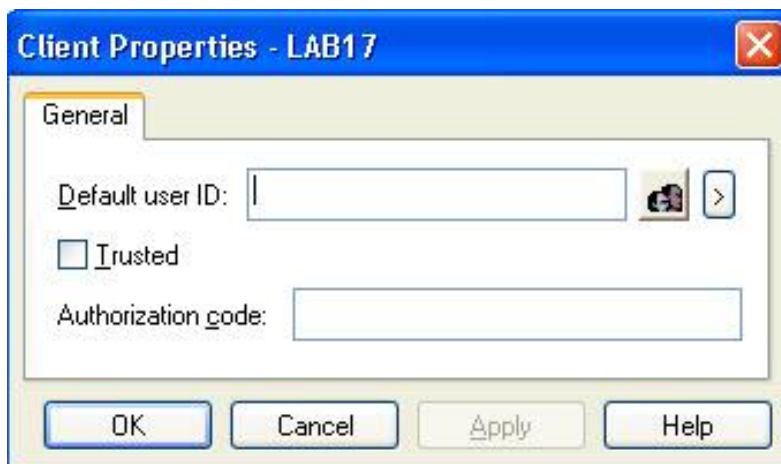
Prior to utilizing the Gateway for CIMPLICITY, you must create a client for the CIMPLICITY server within the project. (This may already have been completed with another Gateway installation) You will be prompted for your machine name. Enter the Computer name and click OK.

To create a client for CIMPLICITY:

1. From the *Security* option in your Workbench, select the *Advanced* folder, then double click on *Client*.

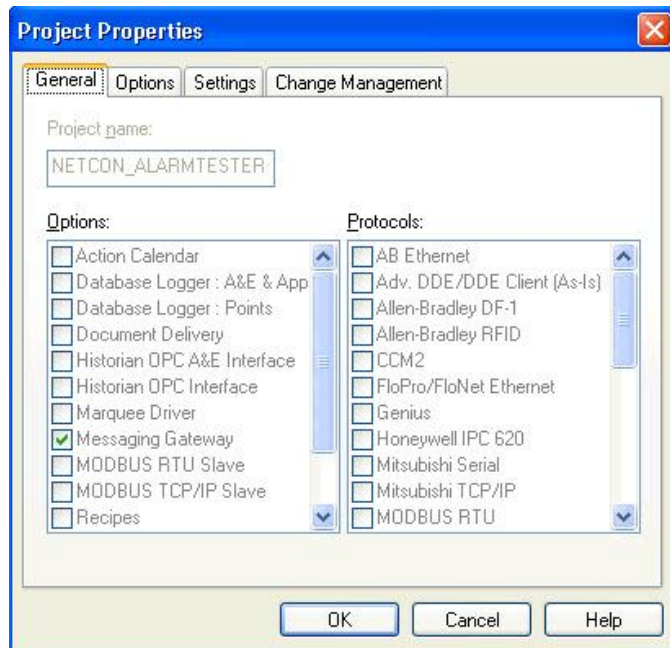


2. This is case sensitive. You will then be prompted to enter in the Default User ID. Enter ADMINISTRATOR then select the Trusted option so you will not be prompted for a password.



Adding Project Properties Options for FPAM Gateway for CIMPLICITY

Open your project in Workbench and select the Project menu in the toolbar, then select *Properties*. In the General tab under Project Properties, make sure Messaging Gateway option is checked as indicated on the following screen:

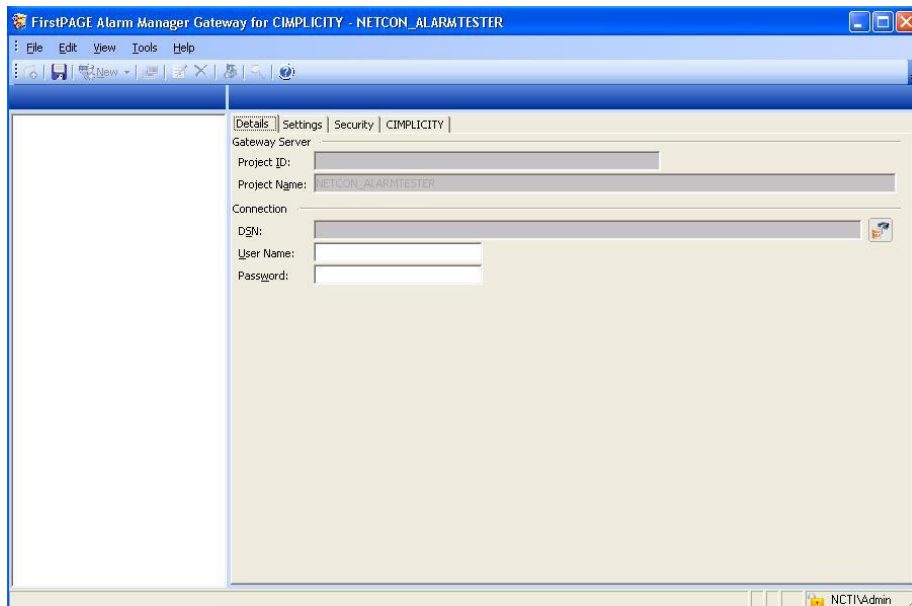


3. Configuration

Configuring Key Components – Gateway Server

From within your CIMPLICITY project Workbench, go to the *Messaging Gateway* menu located under Equipment and select *Administrator*. The first time you start the Administrator, you will be asked to specify the details of your gateway server.

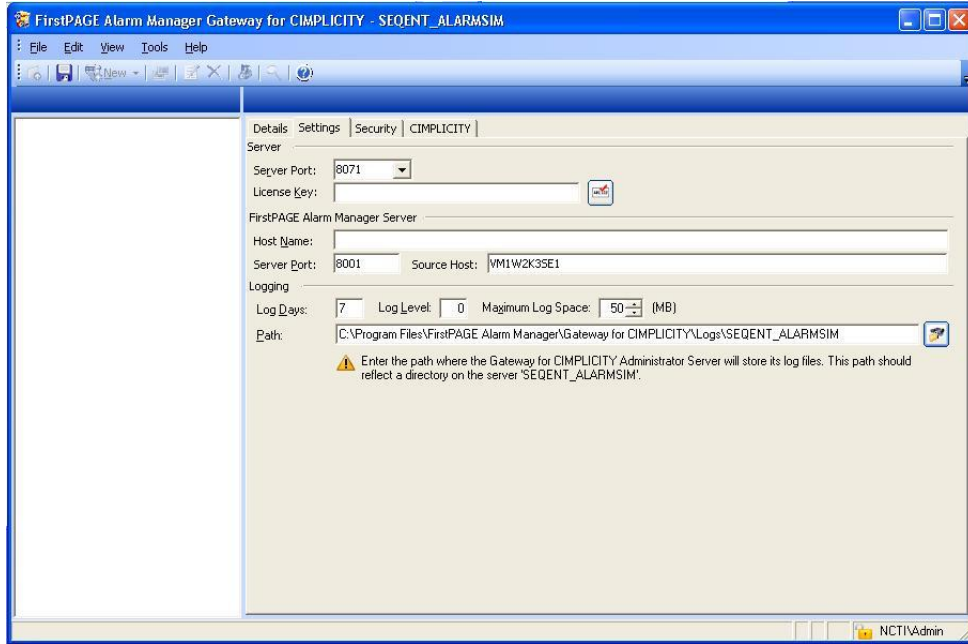
Adding a FirstPAGE Alarm Manager Gateway for CIMPLICITY Server



DETAILS TAB	
Gateway Server	
<i>Project ID</i>	A project ID will automatically be assigned when the new server has been saved.
<i>Project Name</i>	The <i>Project Name</i> is already added. This is the same name of the project that was opened in Workbench.
Connection	
<i>DSN</i>	This field will be populated when the server is saved.
<i>User Name</i>	Optional
<i>Password</i>	Optional

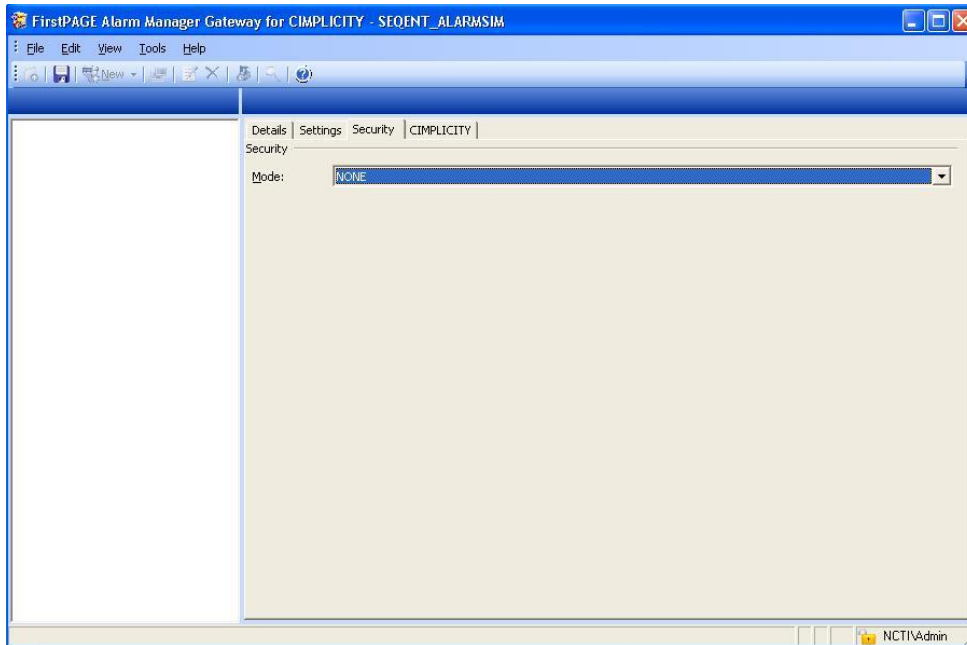
1. Once the Details tab has been configured, select the *Settings* Tab. The following screen appears:

FirstPAGE Alarm Manager Gateway for CIMPLICITY V9



SETTINGS TAB	
Server	
<i>Server Port</i>	A default value from 8070 to 8089 is already added in <i>Server Port</i> . Each project must have a unique port assigned to it. Keep the value the system assigns unless instructed by SeQent to do otherwise.
<i>License Key</i>	Enter a valid FirstPAGE Alarm Manager Gateway for CIMPLICITY license key
FirstPAGE Alarm Manager Server	
<i>Host Name</i>	A TCP/IP resolvable name for the machine running FirstPAGE Alarm Manager Server.
<i>Server Port</i>	Port that connects to the FirstPAGE Alarm Manager Server. Defaults to 8001.
<i>Source Host</i>	A TCP/IP resolvable name for the machine running the FirstPAGE Alarm Manager Gateway for CIMPLICITY and where the CIMPLICITY project is running. This is already populated.
Logging	
<i>Log Days</i>	The number of days the log file will be kept before being purged. Defaults to 7 days.
<i>Log Level</i>	The log <i>Level</i> field is for use at the request of SeQent. In the event of any problems, SeQent may request additional levels of logging to assist in problem solving. The default is 0.
<i>Maximum Log Space</i>	To prevent the log files from consuming too much drive space, you can specify how much space to allot to the log file in the <i>Maximum Space</i> field. Default is 50 MB.
<i>Path</i>	The path specification, local to the actual Marquee Manager Server. It contains the directory where the Marquee Manager Server will store its log files.

- Once the Settings have been defined, click the *Security* tab. The following screen is displayed:

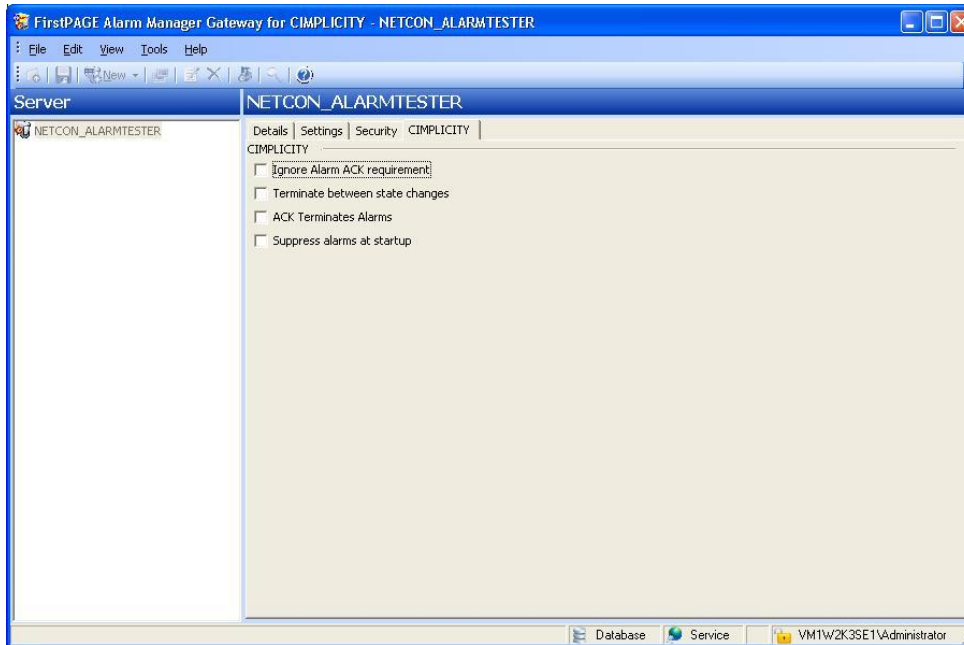


3. To enable Security, you must select a *Security Mode*. Default selection is **NONE**. Your choices include:
 - **WINDOWS**
 - **FORD** (specific only to Ford users)
 - **CHRYSLER** (specific only to Chrysler users)

For more detailed instructions on Security settings, see section entitled ***Enabling and Configuring Security***.

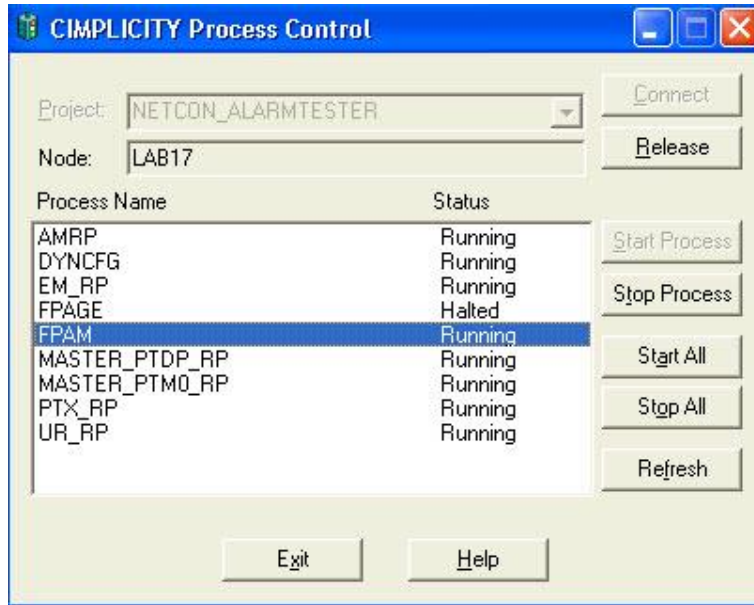
4. Select the *CIMPPLICITY* tab to configure alarm states. These states are global to all alarms within the project. The following is displayed:

FirstPAGE Alarm Manager Gateway for CIMPLICITY V9

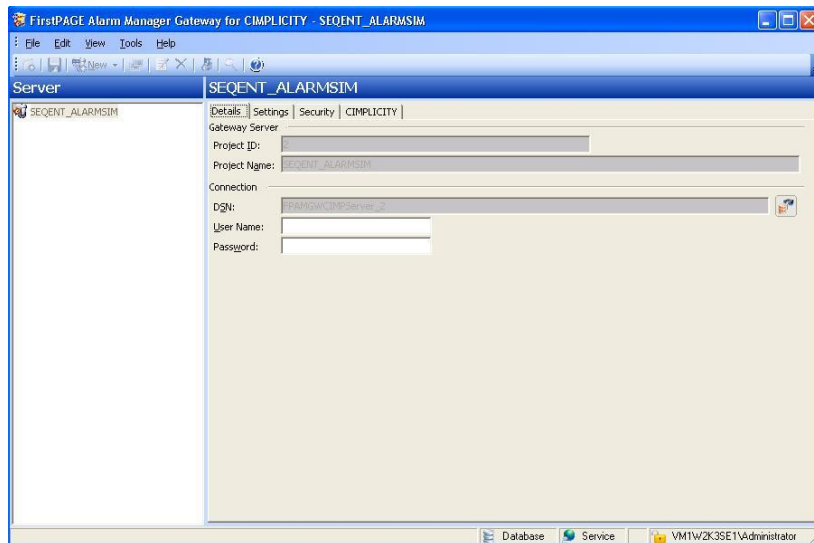


CIMPLICITY TAB	
CIMPLICITY	
<i>Ignore Alarm ACK</i>	Select this option if the alarm does not need to be acknowledged by an operator to suppress messaging even if ACK is required in the alarm's configuration in CIMPLICITY.
<i>Terminate between state changes</i>	This option will stop messaging from escalating further when the alarm state changes. Messaging will commence at level one for that alarm on each state change.
<i>ACK Terminate Alarms</i>	If enabled when the engine receives an ACK it will terminate an alarm.
<i>Suppress alarms at startup</i>	If enabled alarms found at the startup will not be initiated.

5. Click the *Save* icon in the toolbar to save changes to the new server.
6. At this point, you must restart FirstPAGE Alarm Manager Gateway for CIMPLICITY. From the CIMPLICITY Workbench, select *Process Control* from the Runtime folder.



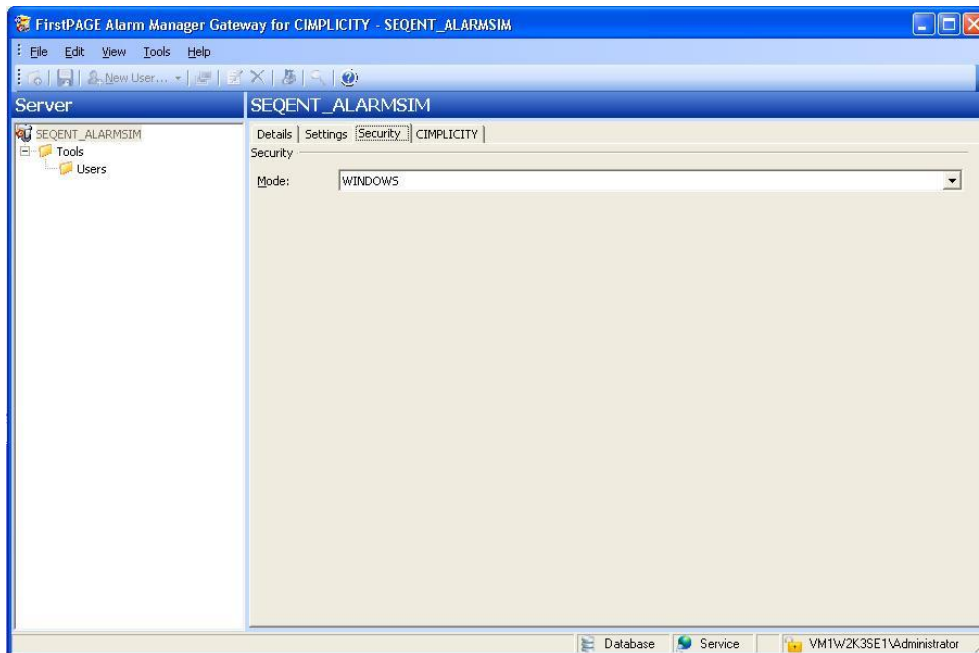
7. Double click to open this then change the status of FPAM from 'Halted' by selecting *Start Process* then OK.
8. The new server is now displayed with an assigned Project ID:



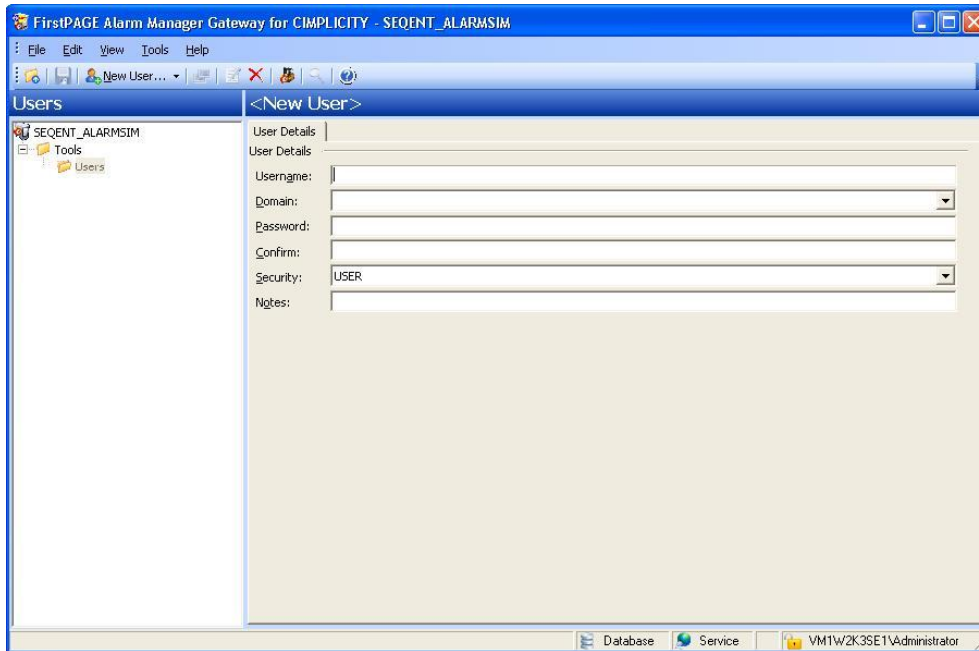
Enabling and Configuring Security

1. To enable Security, you must select a *Security Mode*. Default selection is NONE. Your choices include:
 - WINDOWS
 - FORD (specific only to Ford users)
 - CHRYSLER (specific only to Chrysler users)

Once a mode is selected and saved, a *Users* folder appears under the *Tools* section of the tree view. The Users folder allows the administrator to add destinations with limited access to various user applications.



2. Click on the *Tools* folder then select the *Users* folder. Right click and select *New User* or click the *New* icon in the toolbar. The following screen is displayed:

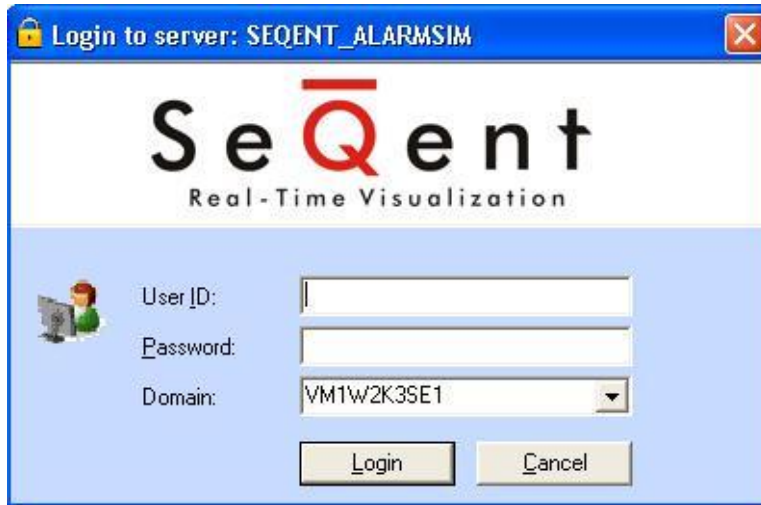


USER DETAILS TAB	
User Details	
<i>Username</i>	Enter the <i>Username</i> for this account. This must be the Windows login username.
<i>Domain</i>	Select the <i>Domain</i> from the drop-down list of available domains
<i>Password</i>	Enter a <i>Password</i> for this username then confirm password.
<i>Confirm</i>	Confirm Password by retyping it.
<i>Security</i>	Select the level of security this user will have. Admin access gives users access to both Administrator and Client, if the application has both components. Default access gives users access to Client only.
<i>Notes</i>	Optional field.

3. Save your changes. The next time you start up the application, you will be prompted for a User ID/password and a valid Domain name before you are allowed access.

The first user entered must be an administrator with Admin security. The last user removed must also be an Admin.

4. The user will now be prompted for a UserID/password and a valid Domain name before the FirstPAGE Alarm Manager Gateway for CIMPLICITY can be accessed.



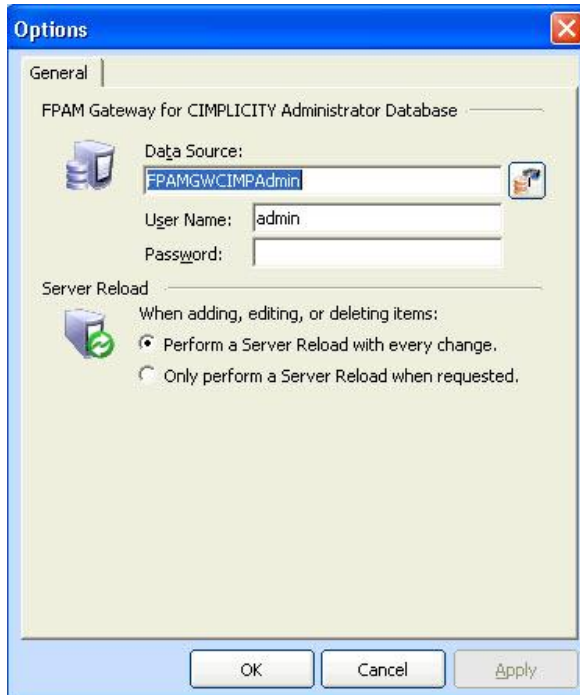
The image shows a Windows-style login dialog box titled "Login to server: SEQENT_ALARM SIM". The dialog features the "SeQent Real-Time Visualization" logo at the top. Below the logo, there is a small icon of a person at a computer. The form contains three input fields: "User ID:" (an empty text box), "Password:" (an empty text box), and "Domain:" (a dropdown menu with "VM1W2K3SE1" selected). At the bottom, there are two buttons: "Login" and "Cancel".

Configuring FPAM Gateway for CIMPLICITY Options

Before using FirstPAGE Alarm Manager Gateway for CIMPLICITY, configure the various settings that control the interface to the gateway. The *Options* menu allows users to set FirstPAGE Alarm Manager Gateway for CIMPLICITY details.

Configuring the Gateway for CIMPLICITY options

1. Click the **Tools** menu then select **Options**. The following screen is displayed:



2. The install kit will default the Data Source to FPAMGWCIMPADMIN , pointing to your Gateway for CIMPLICITY administrator database.
3. The Server Reload option allows the user to select when they want a reload to server: with every change, or only when requested.

4. Using FPAM Gateway for CIMPLICITY

The FirstPAGE Alarm Manager Gateway for CIMPLICITY user interface is conveniently displayed in a tree view.

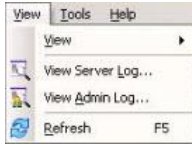
Once configured, there is very little interaction between the user and this application. The management of this application takes place within its associated FPAM Administrator agent.

Viewing the Log Files

In each application, you are able to view the log files associated with the various components of the software. The log files contain an accurate history of every transaction and modification made to the database. Log files are important because they ensure the integrity of the data and provide a means of data recovery.

To View:

1. Select View to get the View Admin Log or View Server Log options.



2. Double-click the log entry for further information.
3. Click the Filters button and choose viewing options to display only the desired information.
4. The Events On: field defaults to the current day.
5. The Status Message field can be used to search for a portion of the message in the log. Only certain characters may be used in this field. When matching the special characters left bracket ([), question mark (?), number sign (#), and asterisk (*), enclose them in brackets. i.e. To find all log items that start with [enter in [[]]* in the Status Message field.

The common search characters are as follows:

Character	Match Made	Example
?	Any single character	Text in the log is ABC, DBC and XYZ. If ?BC is used in the Status Message field, only ABC and DBC will be returned.
*	Zero or more characters	*Initiated* in the Status Message field would return all log items with the word 'Initiated'
#	Any single digit (0-9)	Text in the log is Device1, Device5, Device8, Device10. Keying in Device# in the Status Message field, will return Device1, Device5, and Device8.

6. Select the Automatic Refresh option to automatically refresh the log file based on the seconds specified.

Glossary

Administrator

Typically a GUI application, this component facilitates configuration and monitoring of a server engine. If changes are made to the server configuration the administrator notifies the engine to reload its running configuration either automatically or on user demand. An example of an administrator component is FirstPAGE Administrator.

This administrator allows you to maintain the FirstPAGE server's engine configuration.

Administrator Kit

An administrator kit contains the product's administration component only. After installing this kit on a workstation you may utilize any of the features of the Administrator component.

Alarm

Generates alarms for points that are in an alarm state. It can generate alarm messages about system events, such as device failures, and device statuses.

Class

Alarm class is the order in which an alarm appears relative to other alarms. Alarms with similar characteristics are usually grouped by class.

Distribution List

A FirstPAGE Server distribution list is a collection of marquees, which can be sent a message with a single transaction. Similar to an e-mail distribution list a client who initiates a transaction with a distribution list will automatically send the same message to all associated marquees.

Point

Data that can be collected from various devices such as programmable controllers. Point configuration defines where a point originates, how the data is collected, and what constitutes an alarm state.

Resource

The physical or conceptual units that comprise your facility and can be anything from devices and machines to stations where work is performed.

Server Kit

A server kit typically contains the server engine and administrator components. In some cases a client component is also included with this kit. The server kit is usually installed on a centralized host and is utilized by one or more clients or gateways. An example of a server kit is FirstPAGE Server. This kit contains the FirstPAGE engine, administrator and client.